

for Beambridge Clunbury Clunton Coston Cwm Kempton Little Brampton Obley Purslow The Llan & Twitchen

## Pupils' Present from the Past

On the 29th September 1902 Clara Mary Deacon married Henry Bathhurst in Clunbury Church. Clara was the daughter of William Deacon who had been master of Clunbury School



Clara in about 1902

since 1877. Clara worked as a Pupil Teacher at Clunbury School from 1892 until 1895 when she was awarded a first class Queen's Scholarship with a place at St Mary's Hall, Cheltenham. She went on from there to continue her teaching career at a large London School. On the occasion of her marriage to Henry she was given a biscuit barrel with the



The barrel back in Clunbury

inscription 'Presented to MISS DEACON on her MARRIAGE Sept 1902 From old Scholars of CLUNBURY SCHOOL'. Recently the biscuit barrel came up for auction on Ebay and was spotted by David Evans of Clun who told me about it. I bid for it and it is now in Dutch

Cottage next to the church where Clara and Henry were married. Tragically their marriage was short as Clara died of TB in June 1903 at the age of 26. *David Hill*

## And The Winner Was ...



Photo © Les Hurley

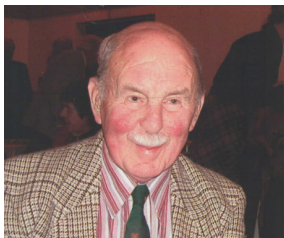
...Twitchen's own Gary Richards on Della Sun, owned and trained by Jim Whitehead of Lawn Farm! Congratulations to Gary and the Whiteheads on winning the Smith & Williamson Severn Hospice Charity Flat Race at Ludlow Racecourse on 28 March, and raising £800 for the Severn Hospice. In a field of eight, Gary was the only rider who had never ridden in a race before. He and Della Sun came from behind to take the lead, and then, in a thrilling finish, won by 11/2 lengths! Is this perhaps the start of a new career?!

*Penny Valentine*

Please send your contributions by the 20th of each month

## Clunbury's Colonel

Colonel Raymond Savill has been a well-known part of the parish community since he and his late wife Beryl first visited Clunbury in 1975, attracted by the challenge of long distance riding on the



*The Colonel on his 90th birthday in 2011*

Shropshire Hills. They moved into Rose Cottage in Beambridge in 1982 and Raymond on his horse 'Dalesman' became a familiar figure along the Clun Valley and over Hopesay Hill.

He and Beryl met many local people over the years through their delivery of Meals on Wheels, but perhaps Raymond is best known for his support of Clunbury Church, especially in leading Remembrance Sunday services for over 25 years. In 2010 he 'masterminded' the restoration of the Clunbury Parish War Memorial at Purslow, and he is still an active and hardworking Vice-President of the Clun and District Branch of the Royal British Legion. In recent years he has given an annual talk about Poppy Day to Clunbury School, an event he really enjoys.

Raymond's military career really began after a scholarship to Charterhouse, where he became Head of the school's Officer Training Corps. In 1939, he turned down a place at Oxford to join the army, little imagining that the war would last six years! Commissioned in the Cheshire Regiment, he served in Orkney and Shetland Defences, North Africa, and Italy, and then, after a spell in Military Government in Italy, he continued post-war army service in the Territorials, rising to Colonel as Deputy Inspector of Reserve Army Transportation Units.

In civilian life, he was a senior railway manager in various parts of the country,

finally retiring in 1985 as Director and Secretary of the British Railway Industry Export Group. He is a Fellow of the Chartered Institute of Transport, and has served twice as a member of its National Council. He was recently elected President of the Bishops Castle Railway Society, to whose Journal he is a regular contributor of articles and photographs.

When asked how Clunbury has changed since his arrival, Raymond replied, "It is much more lively than 25 years ago!" He feels this is because houses change hands more often. Newcomers are received graciously and made welcome, and then feel free to contribute to the life of the community. Certainly, that is something that Clunbury's Colonel has done over many years.

*Raymond Savill and Penny Valentine*

### SW Shropshire Gardening Club

Wednesday 22 May Fiona Grant will talk on 'History of the Walled Kitchen Garden', 7.30pm at Clun Memorial Hall. Visitors very welcome, £3.

### Editorial team member sought

Thanks are due to Jim Tipton, who has been a valued member of the PP editorial team since we started publication. He has defected (moved house) to Clun! Was he head-hunted by the Clun Chronicle we wonder? We would be very pleased to welcome a new member to the team. If you are interested in joining us phone Sue Hill 660355.

### CONTACTS

**Email:** [theparishpost@gmail.com](mailto:theparishpost@gmail.com)

**Website:** [www.theparishpost.org](http://www.theparishpost.org)

**Phone:** Sue Hill 660355

or Lin Brown 660578

or Gisèle Wall 660561

The editorial team does not accept responsibility for any opinions expressed by contributors and reserves the right to edit contributions if deemed appropriate.

## Free Internet and Wi-Fi at Clunbury Café

**D**uring May Clunbury Café will be offering free Internet access and free Wi-Fi for its customers. This is a trial and, if popular, could become a permanent Café feature. Two laptop computers will be available for customers to use and help will be on hand for beginners. One of the laptops has been kindly loaned to us by Aston on Clun Broadplace. Anybody who brings their own Wi-Fi enabled laptop, tablet computer or smart phone will be able to connect to the Café's Wi-Fi network. The Wi-Fi 'hotspot' uses a 3G connection to the Internet. Clunbury Café will be open on the 9th and 23rd May from 10.00 to 11.30am in Clunbury Village Hall. Coffee or tea with home made cake costs just £1.



## Community Larder and Advice Centre (CLAC@CLUN)

**S**everal Parish residents were present at a meeting on 15 April to discuss proposals for the Community Larder and Advice Centre – CLAC – to be set up to cover the Clun Valley and surrounding areas and based at St Georges Church, Clun. Staffed by volunteers, it will offer emergency food aid as well as free, confidential advice on benefits, budgeting etc. A Management Committee will be elected at the Inaugural General Meeting, to be held at the newly refurbished Advice Centre in St Georges at 7:00pm on Thursday 6 June, to which all are welcome. CLAC@CLUN will be formally launched at the Benefice United Service at St Georges on Sunday 30 June at 10.00 am.

For further information contact Douglas Ogram 640830

## Clunbury Village Hall Events

### Saturday 18 May, 7pm **Murder at the Cudham Riding Club!**

a murder mystery party in which comedy, intrigue and dodgy dealings abound

**£2.50 per person**

**Bring and Share Supper, Raffle, Prizes**

**Booking essential as places limited to 40 'suspects' some with prominent roles and others with quiet roles - it's your choice.**

The 'suspects' gather at the Riding Club to pay their respects to the late Lady Cudham, whose death the police believe is suspicious, and to elect a new Chairwoman. You will receive some information in advance about your character. On the night you will watch some action, receive more information and move around talking to others to discover what they know, meanwhile buying and selling racehorses, making as much money as possible and trying to solve the murder. After a break for the Bring & Share supper, suspects fill in a questionnaire to state who they think did it and why. There will be prizes!

**For more information & to book ring Lin Brown 660578**

\*\*\*\*\*



**Saturday 22  
June**

**QUIZ**

## Please Help Our Hogs!

The British Hedgehog Preservation Society is based in Ludlow and May 5 – 11 is Hedgehog Awareness Week.



Jenny Aylwin-Jones, who lives in Clunton, is a member of the society and has unofficially looked after orphaned, sick and injured hedgehogs for the past twenty years, but is now an official carer. That means that the BHPS can give her details out to anyone locally who finds a hedgehog in need of help. "We can't always get to save them in time", she says, "but last summer a little chap who had been stuck in a drain, and a young female who had been scalped by a mower were both nursed back to health and then successfully released in Clunton - here's hoping for the patter of tiny claws!"

The long, hard winter has had a very detrimental effect on these small creatures and numbers are in steep decline. The BHPS suggests a number of ways to help:

- check long grass before strimming or mowing and look in compost heaps for young hog families (an ideal site for a nursery!) before turning with sharp implements.

- try and reduce the use of pesticides or stop using them altogether. Slug pellets in particular can cause a lingering and agonising death.

- dispose of litter safely – breaking up plastic pots and cups, crushing tins, and cutting up four/six pack rings and rubber bands.

- cover drains and holes and provide a ramp out of cattle grids.

- check before you light a bonfire (another favourite hog home), ideally building on the day or re-site before burning.

- keep netting a foot above the ground and provide a ramp or half submerged stones in ponds or pools to avoid hedgehogs drowning. They can swim but not forever!

- keep shed, garage and greenhouse doors closed and poisons out of reach.

A shallow dish of water (never cows milk) and some meat-based cat or dog food is always welcome. Peanuts (unsalted only) should always be crushed and never left out whole.

For more information go to [www.britishhedgehogs.org.uk](http://www.britishhedgehogs.org.uk) or contact the BHPS on 01584 890801.

*Jenny Aylwin-Jones & Sue Hill*

## Clunbury School Corner

Here we are in April! We hope you had a fantastic Easter break, and got up to some great things. SATs are fast approaching and year 6 are preparing for these big exams. They will do brilliantly as they always do.

Two ladies from Child-Line came to talk to year 5 and 6 about how to keep happy and safe. We played a few games and activities to do with children's worries. They will be back in a couple of weeks to do a workshop with us.

The Science Boffins came in and were brilliant! On that day we were joined by Bucknell School who stayed with us the whole day and also helped us to build the cob oven.

The other day a dance company for boys came in and they went down to the village hall to do dance. They had a great time and would like to do it again. This activity will go on for 7 weeks, and hopefully at the end they will be experts!

See you next month with more exciting news!

*Charlotte (Y6)*

**OFSTED:** a recent inspection rated Clunbury School 'good' in all 4 categories of pupil achievement, quality of teaching, behaviour and safety of pupils, and leadership and management. Promoted from 'satisfactory' at the last inspection, there are now only a couple of areas that need improvement before the school is rated 'outstanding'. The Parish Post congratulates all involved!

## Community Shop at Aston on Clun

The shop is located in the grounds of the Village Hall. Opening hours are:  
Monday - Saturday 8.00am to 6.00pm  
Sunday 9.00am to 12 noon.  
Shop phone number 660849.

The Shop stocks fresh bread, fresh vegetables and fruit, eggs, milk and other dairy, sausages, bacon and cold meat, wine and beer as well as a range of groceries and household products. Fresh food is sourced from suppliers in Shropshire. Daily and Sunday newspapers are available including the Shropshire Star and the South Shropshire Journal (every Friday).

The Shop will offer a cash back facility when goods are purchased with a debit card. Stamps will be sold. Other services are expected to be announced shortly.

We are still keen to hear from people who can help even if you don't wish to serve behind the counter – there are other tasks. If you want to help contact David Jones 660493 or Christine Flitney 661056.

*Editors' note. The Parish Post congratulates all involved in the speedy opening of the Shop and wishes the project well for the future.*

## Opera from Glyndebourne at Aston on Clun!!

Hopesay W.I. have arranged to show live via satellite -

Ariadne auf Naxos - 4 June, 7.00pm

Hippolyte et Aricie - 25 July, 6.15pm

Don Pasquale - 6 August, 7.15pm

Doors open one hour ahead. In Glyndebourne style bring a picnic to the Green before the performance. Wine, soft drinks, tea, coffee and ice creams will be available. Seats are limited and tickets will cost £13. Contact Jean Jones 660493 or Mary Evans 660545.

## New Parish Councillors

Parish Councillors have a term of four years after which a new PC must be elected *en bloc*, and this was due to take place in May 2013. As it happens, nine nominations were received for the nine vacancies, thus no election is required. This will reduce the costs incurred and hence the charge made to the PC by Shropshire Council. On the down side no one on the new PC can say they were elected - so much for democracy. Two members of the 'old' PC, Harry Collins and Stuart Seabury, did not stand for re election, instead we have Pat Harding from The Orchard, Clunton and Sylvia Jones from Cwm House, Clunton. The Parish Councillors who will continue from the old Council are: Karl Bailey, John Croxton, Ian Davies, David Hill, John Hoskins, Malcolm Jones and Sandra Morgan. On 16 May at 8.00pm the Annual Parish Assembly will be held in Kempton Village Hall and all parishioners are encouraged to go. The regular Parish Council meeting will follow the Assembly. The Parish Post anticipates that with its new members the Parish Council will be even more vibrant and dynamic than before!!

**Remember to vote for your  
Unitary Councillor on 2 May.**

## Fantastic Turn Out for Talk

Clunbury Village Hall was packed with a capacity audience of about 90 people who enjoyed an illustrated talk by David Evans. David has been collecting old postcards for ten years and showed us a wide range of cards with local views projected onto the big screen. David has lived in the Clun Valley all his life and gave an animated commentary on the images shown. People with local knowledge joined in with additional information. Special mention should go to Sandra Morgan and Barbara Freeman for their contributions.



**Events Diary for May and part of June 2013 - go to [www.theparishpost.org](http://www.theparishpost.org) for more details**

Wed 1	10 - 11.30am	Regular coffee morning	Aston on Clun Village Hall
Wed 1	8.00pm	BCFS - Beginners	Three Tuns, Bishop's Castle
Wed 1	9.00pm	Quiz night	Kangaroo Inn, Aston on Clun
Thur 2	7.00am - 10.00pm	Unitary Council Election	Clunbury Village Hall
Fri 3	7.30pm	Flicks - Skyfall	Clun Memorial Hall
Fri 3	9.00pm	Live Music: The Rhythm Thieves	White Horse, Clun
Sun 5	6.30pm	Evensong (BCP)	St Swithin's, Clunbury
Mon 6		Green Man Festival	Clun
Thur 9	10 -11.30am	Clunbury Café with free Internet and Wi-Fi	Clunbury Village Hall
Fri 10	8.00pm	Flicks - Les Miserables (2012)	Clungunford Parish Hall
Sat 11	7.30pm	Flicks - Quartet	Clun Memorial Hall
Sun 12	9.30am-12.30pm	Kemp Valley Community Wildlife Group - Bird Walk	Bury Ditches
Sun 12	10.00am	Benifce Christian Aid Service	Aston On Clun Village Hall
Sun 12	6.30pm	Evening Prayer	St Mary's, Clunton
Mon 13	9-11am	Parent and Toddler group - just turn up	Clunbury Village Hall
Mon 13	7.00 - 9.00pm	Free help with using computers at Aston on Clun Broadplace	Kangaroo Inn, Aston on Clun
Tue 14		Mobile library:-Clunbury Bridge 10.10 - 10.30am, Clunton 10.40 - 11.00am, Obley 12.45 - 12.55pm	
Wed 15	10 -11.30am	Regular coffee morning. 10.00am to 11.30am	Aston on Clun Village Hall
Wed 15	6.30pm	Kemp Valley Community Wildlife Group - Wildflower Walk	Long Nursery Wood, Lyd. North
Wed 15	9.15pm	Live acoustic folk music	Crown Inn, Clunton
Thur 16	7.00pm	NT Live - This House	Aston on Clun Village Hall
Thur 16	8.00pm	Parish Assembly followed by Parish Council Meeting	Kempton Village Hall
Fri 17	9.00pm	Brian Copsey album release	White Horse, Clun
Sat 18	7.00pm	Murder Mystery - Murder at the Cudham Riding Club!	Clunbury Village Hall
Sun 19	11.15am	Holy Communion	St Mary's, Clunton
Sun 19	1 - 4.00pm	Clunbury School Fair - farmer's market, cream teas, sports	Clunbury School
Sun 19	6.30pm	Evening Prayer (BCP)	St Swithin's, Clunbury
Mon 20	9-11am	Parent and Toddler group - just turn up	Clunbury Village Hall
Mon 20	10.00am - 12.2 - 4.00pm	Bishop's Castle & District Carer's Group Drop in Surgery Carer's meeting	Pharmacy, Bishop's Castle Coverage Care Home
Wed 22	7.30pm	SW Shropshire Gardening Club - talk on 'History of the Walled Kitchen Garden'	Clun Memorial Hall
Thur 23	10 -11.30am	Clunbury Café with free Internet and Wi-Fi	Clunbury Village Hall
Fri 24		Clunbury School closes for half term holiday	
Fri 24	9.00pm	Booze & Blues Festival until Monday 27 Live Music: Red River Blues	White Horse, Clun
Sat 25	6.00pm	Live Music: Perry Foster	White Horse, Clun
Sat 25	9.00pm	Live Music: Slide Boy Roy	White Horse, Clun
Sun 26	11.15am	Holy Communion (CW)	St Swithin's, Clunbury
Sun 26	5.30pm	Live Music: Gravy Train	White Horse, Clun
Sun 26	9.00pm	Live Music: Bob Still Blues Band	White Horse, Clun
Mon 27	3.00pm	Live Music: Rik & Wayne Martin Band	White Horse, Clun
Mon 27	6.00pm	Live Music: Whiskey River	White Horse, Clun
Tue 28		Mobile library:-Clunbury Bridge 10.10 - 10.30am, Clunton 10.40 - 11.00am, Obley 12.45 - 12.55pm	
Wed 29	10 -11.30am	Regular coffee morning. 10.00am to 11.30am	Aston on Clun Village Hall
Fri 31	9.00pm	Live Music: Doctors Orders	White Horse, Clun
<b>June</b>			
Mon 3		Clunbury School reopens	
Mon 3	9-11am	Parent and Toddler group - just turn up	Clunbury Village Hall
Tue 4	7.00pm	Opera from Glyndebourne - Ariadne auf Naxos Contact Jean Jones 660493 or Mary Evans 660545	Aston on Clun Village Hall
Thur 6	10 -11.30am	Clunbury Café	Clunbury Village Hall